



## Bathing establishment Fact Sheet

|                |                         |
|----------------|-------------------------|
| Bathhouse name | Il Faro                 |
| Address        | Lungomare Leopoldo 70   |
| City           | Marina di Grosseto (GR) |
| Contacts       | Tel. +39 0564 071848    |
| Website        | Not detected            |

**TESTED BY:** [Handy Superabile - Social Promotion Association](#) in summer 2023

**Please note** The following information refers to the verification date shown at the bottom of each card. **The Association** is not responsible for any significant changes made by the property after the visit.

### Summary

|  |    |
|--|----|
| Bathing establishment Fact Sheet .....                             | 1  |
| Arrival at the facility .....                                      | 2  |
| Private/public parking.....  | 2  |
| Pathway from the parking lot to the main entrance .....            | 2  |
| Reception.....   | 3  |
| Bar/restaurant .....   | 4  |
| Internal Pathways and common services.....                         | 5  |
| Internal Pathways .....  | 5  |
| Toilet and shower accessible to guests with reduced mobility ..... | 5  |
| Changing room .....  | 7  |
| Beach.....   | 8  |
| Children's play area .....   | 9  |
| Swimming pool .....  | 9  |
| Doctors' Offices/Healthcare Facilities .....                       | 10 |

Project carried out with the contribution of the




Presidenza del  
Consiglio dei Ministri  
Ministro per la disabilità



**Arrival at the facility**

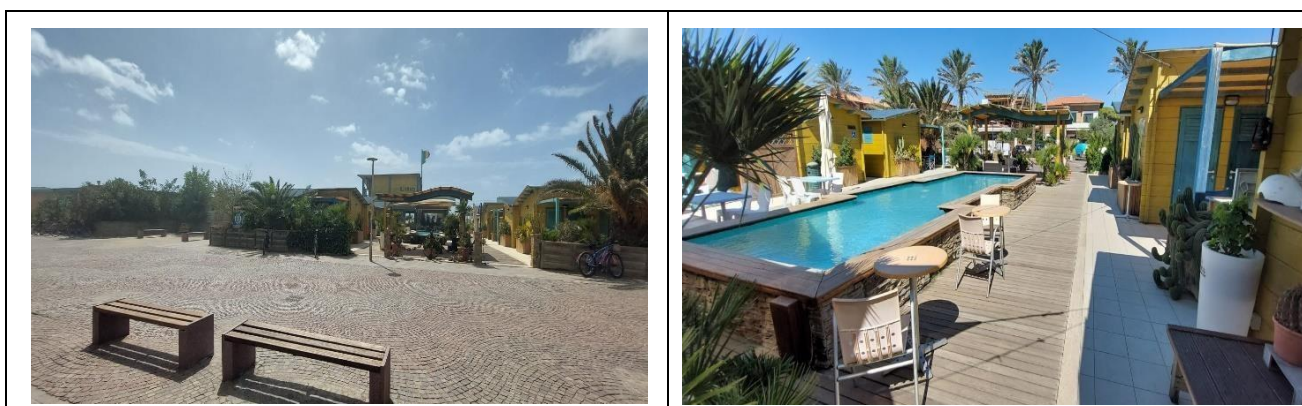
**Private/public parking**

|  |   |
|--|---|
| Presence of private parking  | YES   |
| Presence of parking space reserved for people with disabilities                    | YES   |
| Type of parking surface  | ASPHALT   |
| Public parking nearby  | YES   |
|  |  |

**Pathway from the parking lot to the main entrance**

|   |                 |
|---|-----------------|
| Pathway from the car park to the entrance | Flat            |
| There are markers and tactile maps        | NO              |
| Usable door/entrance width                | more than 90 cm |





## Reception

|  |   |
|--|---|
| Umbrella booking system  | <input type="checkbox"/> Via web<br><input checked="" type="checkbox"/> By phone<br><input checked="" type="checkbox"/> On-site |
| Presence of multilingual staff   | YES   |
| Presence of plant plan with key to services available  | NO  |
| Presence of visuo-tactile map  | NO  |
| Bulletin board/information panels at an average height of 130 cm in a well-lit area and font size at least 14 dpi with a contrast ratio greater than 4.5:1 | NO  |
| The staff attended training courses on welcoming people with different disabilities  | NO  |



**Bar/restaurant**

|  |  |
|--|--|
| Type of venue                              | Snack bar  |
| Access to the premises                     | Flat   |
| Usable door/entrance width                 | more than 90 cm  |
| Bar counter                                | height greater than 100 cm   |
| Types of tables                            | with central support   |
| Space underneath the tables from the floor | 70 cm  |
| Multilingual menu                          | YES  |
| Menus with large print fonts               | NO   |
| Braille menu                               | NO   |
| Table service for people with disabilities | YES  |
| Availability of gluten-free food           | <input checked="" type="checkbox"/> bread <input type="checkbox"/> pasta <input type="checkbox"/> biscuits<br><input checked="" type="checkbox"/> ice cream <input checked="" type="checkbox"/> Pre-packaged foods |





## Internal Pathways and common services

### Internal Pathways



|   |   |
|---|---|
| <p>Indicate whether the pathways connecting the entrance to the beach are flat or with ramps in addition to those already described</p> | <p>flat paths with a ramp 200 cm long and more than 90 cm wide with a gradient of 8 %</p> |
|   |        |

### Toilet and shower accessible to guests with reduced mobility

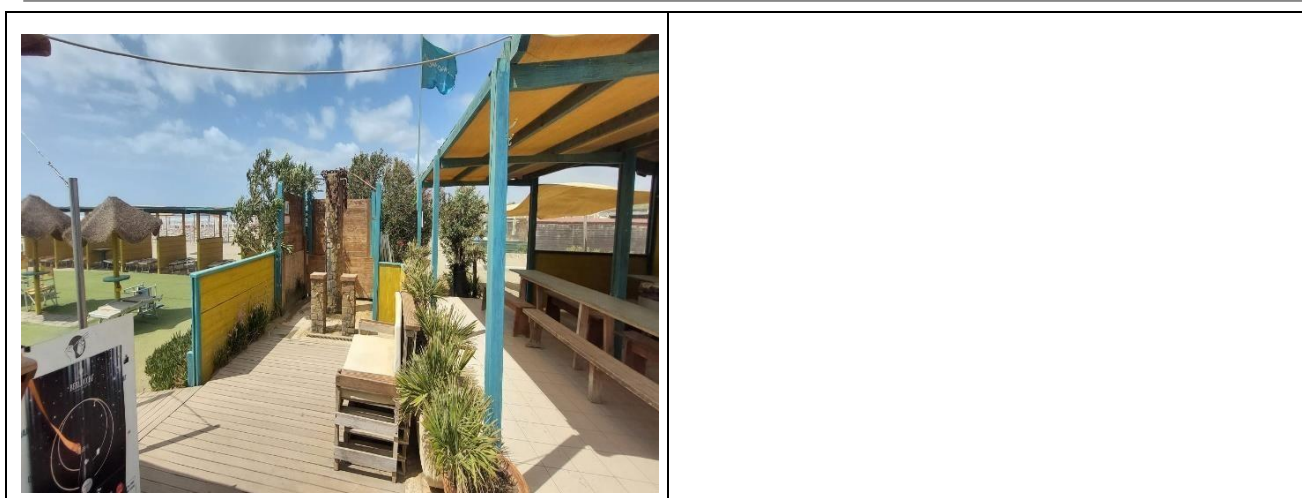
|   |   |
|---|---|
| <p>Number <b>of toilets</b> accessible/usable by guests with reduced mobility</p> | <p>1</p>  |
| <p>Access to the premises</p>   | <p>Flat</p>   |
| <p>Usable width of the entrance door</p>  | <p>90 cm</p>  |
| <p>Toilet height</p>  | <p>50 cm</p>  |
| <p>Open front toilet seat</p>   | <p>YES</p>  |
| <p>Support handles</p>  | <p>on both sides of the toilet</p>                            |
| <p>Flexible hand shower at the side of the toilet</p>                             | <p>NO</p>   |
| <p>Free space on the sides of the toilet</p>                                      | <p>left 20 cm<br/>right 90 cm<br/>frontal more than 90 cm</p> |





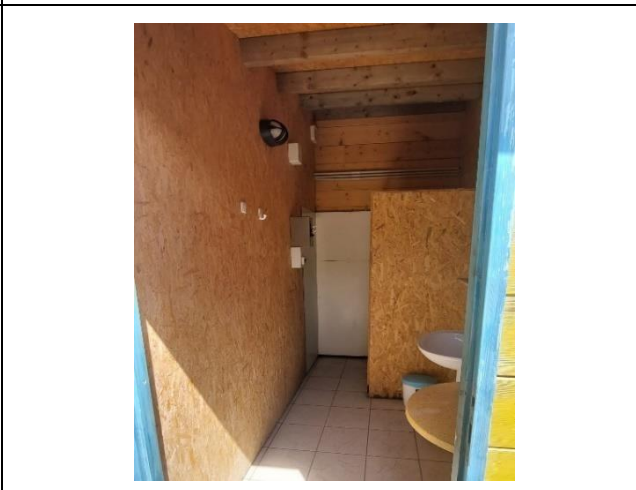
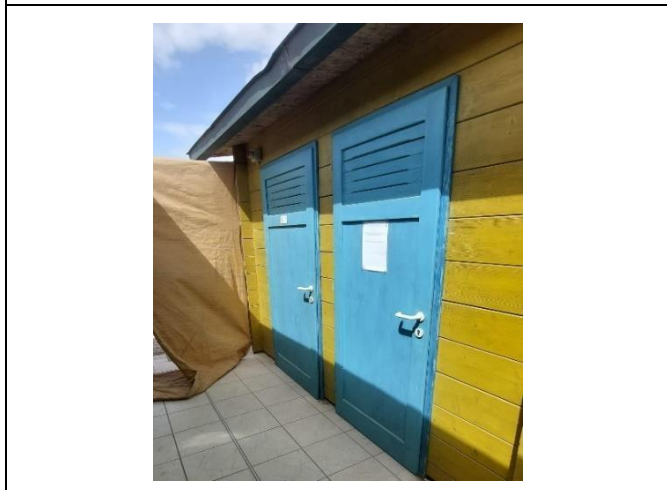
|  |   |
|--|---|
| Electric doorbell/phone  | YES   |
| Washbasin with space underneath for wheelchair                                     | more than 70 cm   |
| Height from the ground on the bottom edge of the mirror                            | Suitable for wheelchair users   |
| Baby changing table  | NO  |
|  |  |
| Accessible <b>shower</b> available for guests with reduced mobility                | SI separated from the toilet room   |
| Access to the shower room if separated from the toilet room                        | Flat  |
| Useful width of the door/entrance gate if separated from the toilet room           | 85 cm   |
| Shower type  | open-type   |
| Floor-level shower   | YES   |
| Shower chair   | missing   |
| Grab bar   | NO  |
| Presence of shower head or ups and downs   | fixed shower head   |
| Electric doorbell/phone  | NO  |







**Changing room**

|   |                                       |
|---|---------------------------------------|
| Accessible changing room available for guests with reduced mobility | Shower room and changing room         |
| Access to the premises  | Flat                                  |
| Usable door/entrance width  | 90 cm                                 |
| Size of the dressing room   | sufficient for wheelchair manoeuvring |
| Presence of a cot   | NO                                    |
| Coat rack height from the ground                                    | over 140 cm                           |






**Beach**

|  |   |
|--|---|
| Type of beach  | Sand & Synthetic Grass  |
| Access to the beach  | by ramp length 200 cm, more than 90 cm width slope 8 %                              |
| Walkway to reach the umbrellas   | YES   |
| Type of walkway  | PVC   |
| Walkway width  | 100 cm  |
|    |  |
| Removable Platform between the walkway and the umbrella station to facilitate the passage and parking wheelchair                           | YES   |
| Amphibious beach chair available for helping people with reduced mobility to enjoy swimming (owned by the establishment or by association) | YES   |





## Children's play area

|  |  |
|--|--|
| Children's play area   | inaccessible to children with reduced mobility due to sandy bottom |
| There are games for children with reduced mobility                                 | NO   |
|  |  |

## Swimming pool

|   |                 |
|---|-----------------|
| The property has a swimming pool              | YES             |
| Access to the swimming pool                   | Flat            |
| Useful width of the entrance gate             | more than 90 cm |
| Access to the pool                            | with ladder     |
| Bathing aids for guests with reduced mobility | Not present     |

Project promoted by



Regione Toscana



### Doctors' Offices/Healthcare Facilities

|                             |  |
|-----------------------------|--|
| Hospitals near the facility | <b>Misericordia Grosseto Hospital</b> 10 km  |
| Other Healthcare Facilities | <b>Distretto Socio Sanitario</b> via Don Giovanni Minzoni, 5, 58100 Grosseto tel. 0564 485111 approx. 10 km<br><b>Dialysis Service on Holiday</b> at Ospedale Misericordia Grosseto U.O. Nephrology and Dialysis Tel. 0564 485.218 |

TESTED BY: **Handy Superabile Social Promotion Association** in summer 2023

Project carried out with the contribution of the



**Presidenza del  
Consiglio dei Ministri**  
Ministro per la disabilità